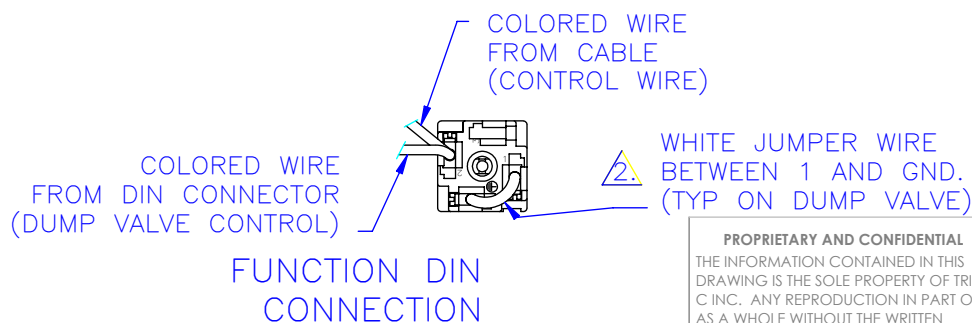
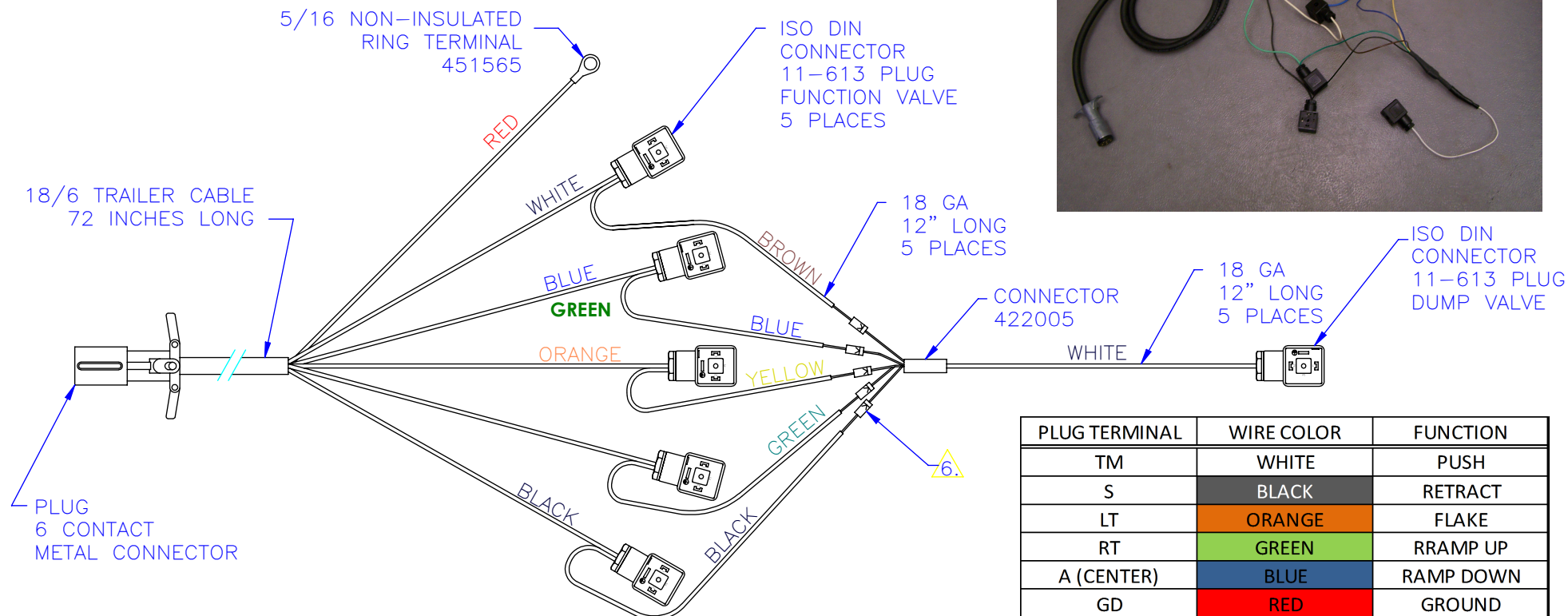
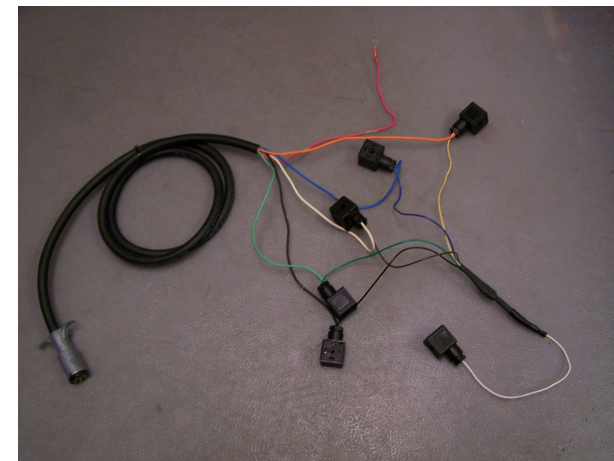


NOTES:

1. EXPOSE 12 INCH LEADS AND STRIP 1/2 INCH.
2. DIN JUMPER WIRE IS 2 INCHES, STRIP 7/16 INCH.
3. INSTALL FUNCTION DIN CONNECTORS WITH REMOVAL NOTCH SAME DIRECTION AS 90° BEND AS SHOWN.
4. INSTALL DUMP VALVE DIN CONNECTOR WITH TERMINAL 2 SAME DIRECTION AS 90° BEND AS SHOWN.
5. MUST PROVIDE WEATHER SEAL AT CONNECTOR OPENING.
6. INDIVIDUALLY SHRINK WRAP EACH RECTIFIER THEN SHRINK WRAP ALL RECTIFIERS TOGETHER.

REV.	REVISIONS DESCRIPTION	DATE	APPROVED
OLD A	REDESIGNED TO NEW CONFIGURATION	12/04/02	CED
OLD B	REVISED TO MATCH VENDOR REQUIREMENTS DWG # WAS HFL-910	04/12/04	CED
A	UPDATED TO NEW STANDARD DRAWING	9/24/2012	



VENDOR INFORMATION: P/N B2205

P.O. BOX 248,
SABETHA, KS 66534

TRIPLE C
INC.

DIMENSIONS ARE IN INCHES
TOLERANCES:
FRACTIONAL $\pm 1/16$
ANGULAR: MACH ± 1 BEND \pm
TWO PLACE DECIMAL ± 010
THREE PLACE DECIMAL ± 005

MATERIAL --

DO NOT SCALE DRAWING

NAME	DATE
DRAWN HEATH	9/24/2012
PART #	FP-HFL-913
ASM #	

COMMENTS:
FLAKER VALVE
HARNESS, DIN
SECTION

SIZE A	DWG. NO. 40-1902	REV. A
SCALE: 1:1	WEIGHT: --	SHEET 1 OF 1

PROPRIETARY AND CONFIDENTIAL
THE INFORMATION CONTAINED IN THIS
DRAWING IS THE SOLE PROPERTY OF TRIPLE
C INC. ANY REPRODUCTION IN PART OR
AS A WHOLE WITHOUT THE WRITTEN
PERMISSION OF TRIPLE C INC. IS PROHIBITED.